

# Battery indicator



## SL-BI012

12V 24V 36V 48V LCD battery indicator battery charge gauge and hour meter for DC powered equipment such as fork lifts, golf carts, floor care equipment, and any other battery powered equipment.

### PRODUCTS DESCRIPTION

large LCD Green backlight SL-BI012 Battery Indicator with hour meter. It can work on most all batteries include Lead-acid storage battery, GEL battery, LiFeO4 battery,

AGM battery and other battery. It has a powerful battery indicator system and some other unique design.

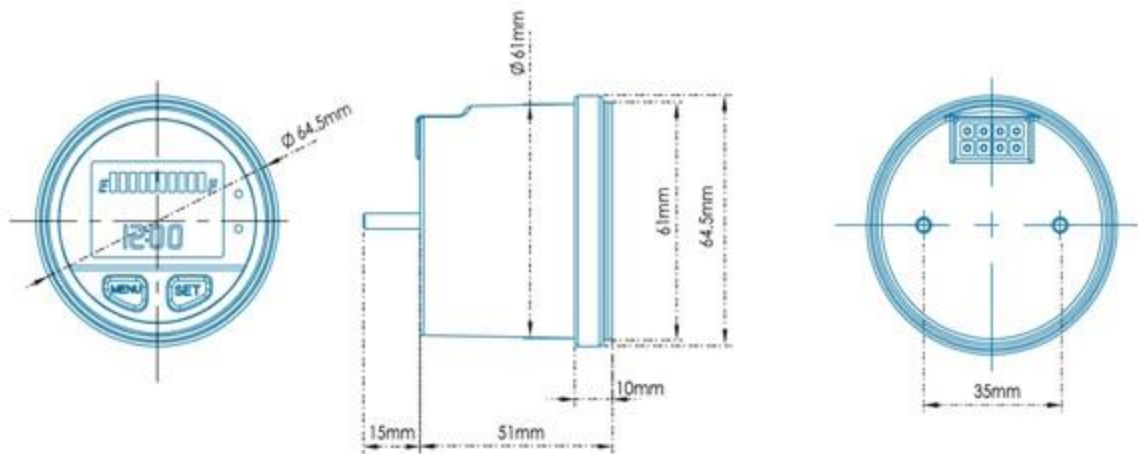
**Battery Indicator System Including:** Current battery level, current voltage display, Delay Display Function, Charging voltage settable, Delay time of rising and falling, Overvoltage and undervoltage alert, etc.

**Hour Meter System Including:** Total running hours TOT, maintenance time SVC, CLOCK. etc.

**Unique Design Including:** Large LCD, green backlight, internal battery+external power, etc.

SPECIFICATIONS

Product Model	SL-BI012
Product Size	Φ64.5mm×66mm
Display Screen	LCD + Green Backlight
Screen Size	40.9mmX16.9mm
Button Type	Touch Switch
Operating voltage	DC 12-48V
Timing range	99999H
Timing accuracy	0.1H
Voltage accuracy	0.50%
Internal Battery	CR2450 540mAH
Packing Size	70x70x70mm
N.W.	135g
Waterproof Rate	IP65
Charging delay time	200S
Delay time of every bar	155S
Housing Material	ABS
Package	White box



# Battery Indicator with Hour Meter



SL-BI012



Battery



Voltage



HOUR



SVC



Backlight

# Battery Indicator with Hour Meter

1 + 2 + 3

## 1 Battery Indicator System

- Current battery level
- Current voltage
- Undervoltage / overvoltage alert
- etc

## 2 Hour Meter System

- TOT
- TOT settable
- SVC
- Clock
- etc

## 3 Unique Design

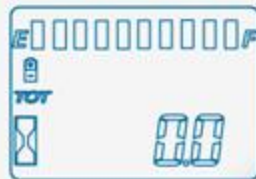
- Easy Installation
- Waterproof IP65
- Internal battery + external power
- Green backlight
- etc



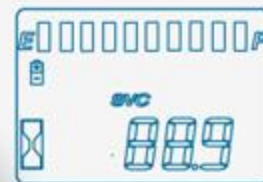
## Battery Indicator with Hour Meter

Five main interfaces display by pressing the button.

Total timing interface



SVC interface



Clock interface



Power interface



Voltage interface

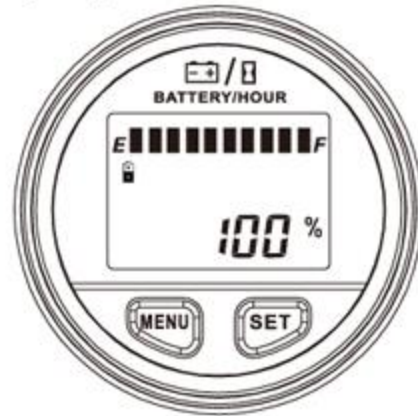




# Battery Indicator System

## Real-time battery level display

10 bar segment battery level display and percentage of current battery level display





# Battery Indicator System

Two battery modes selectable

① **Normal mode** **nor**

This mode has 19 types of voltage ranges which can choose by user.

② **User mode** **user**

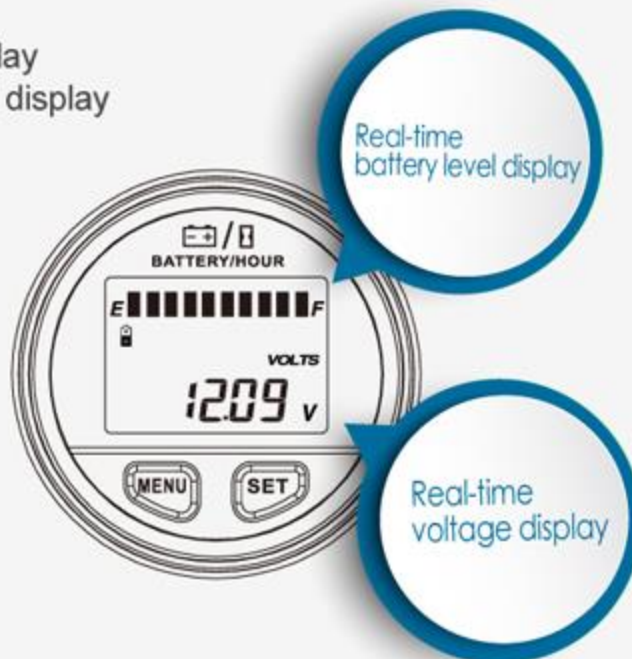
At this mode, user can set battery **empty / full** value, battery **charging voltage** and **battery quantity** freely.



# Battery Indicator System

**Voltage and battery level test and display at the same time**

Real-time voltage display  
Real-time battery level display





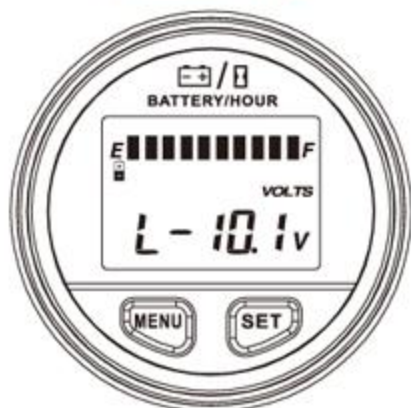


# Battery Indicator System

## Undervoltage / overvoltage Alert

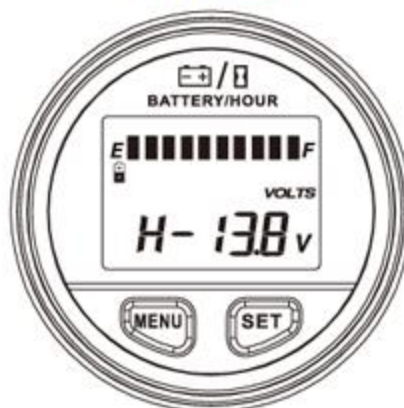
Undervoltage / overvoltage alert can be set by user to protect the battery

### Undervoltage



Setting range: 8-50V/OFF  
Default: OFF

### Overvoltage



Setting range: 10-60V/OFF  
Default: OFF



## Battery Indicator System

### Delay Display Function

**155s** delay when battery capacity down suddenly with big power cost. Avoid meter display up and down too quick. Let user know the actual capacity.

(eg: When an e-bike climbs a mountain, the meter will display nearly empty, but actually it has many power left.)

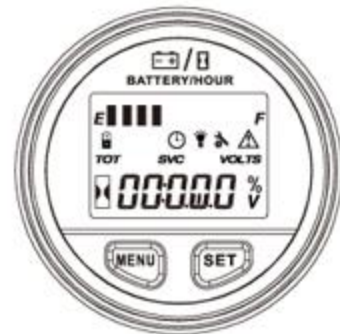




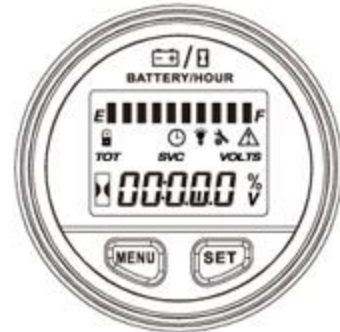
# Battery Indicator System

## Power off Memory Function

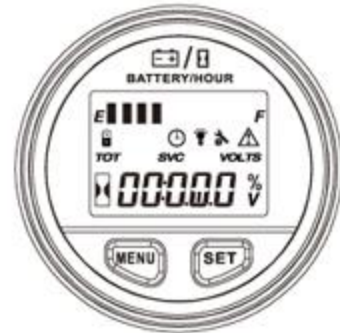
When cut power with the meter,  
it will record power consumption at the time.



After re-connected with power,  
if the battery is fully charged,  
battery indicator will display full power.



When battery is not full powered,  
it will display when the power is off.



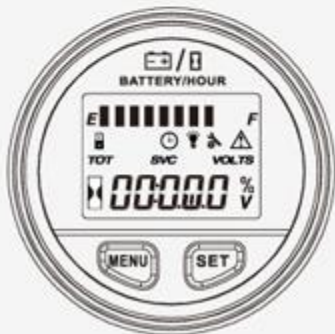


# Battery Indicator System

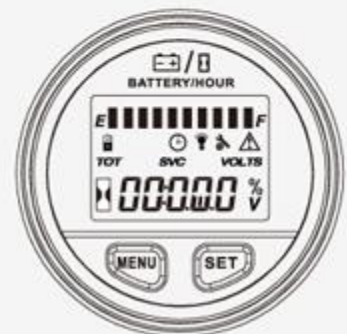
## Recognition false battery charging signals Function

Only when battery charging  
higher than definite voltage and last more than 200s  
can it be recognized to full battery.

display 10 segments circularly



After 200s 

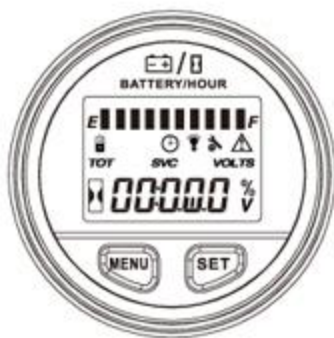




## Battery Indicator System

### Meter display only down no up

Meter display can only from full to empty, can not up.  
While using battery, it will not add capacity midway as we all know.

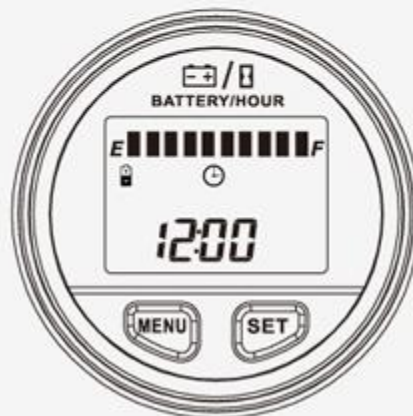


Battery level indicates  
From up to down



## Hour Meter System-Clock

Clock: 24-Hour system





## Hour Meter System-TOT

### Total hours: Accumulating total hours

Accumulating total hours of engine. Range : 0 - 99999<sub>H</sub>

hour resolution is: 0.1<sub>H</sub> = 6<sub>Min</sub>

When work time more than 9999.9 H,

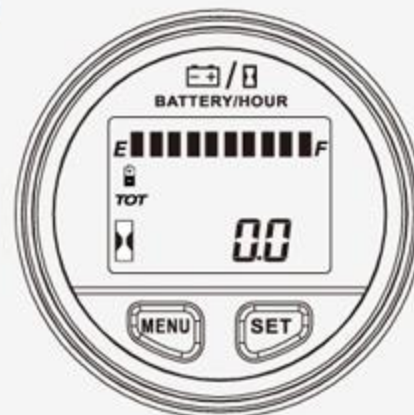
hour resolution will be 1H.

TOT can be set by user

Setting range: 0-9999.9

0 - 99999<sub>H</sub>

0.1<sub>H</sub> = 6<sub>Min</sub>

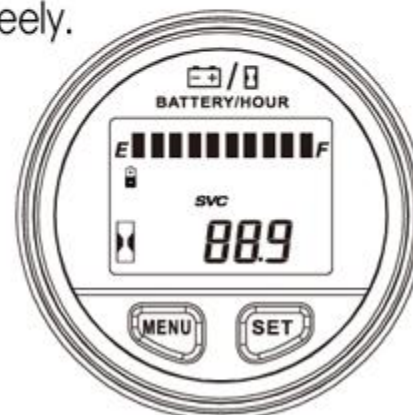


## Hour Meter System-SVC

Maintenance time can be set by user freely.

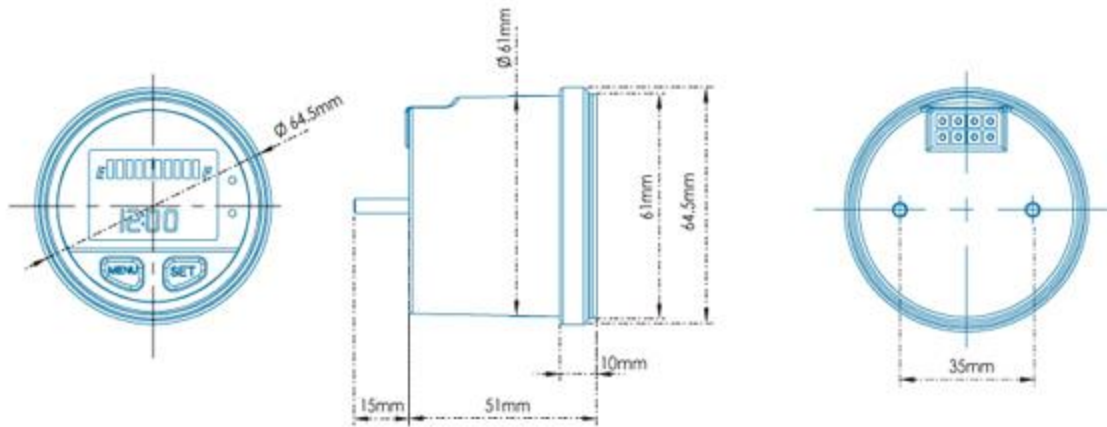
Setting range: 0-9999.9<sub>H</sub>.

Set to 0 means close this function.



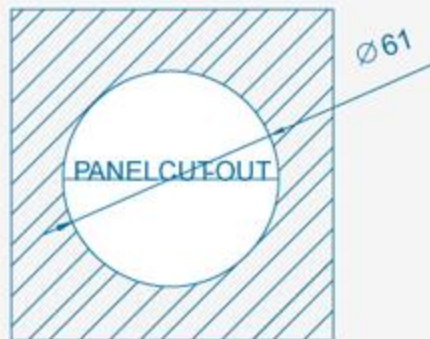
# Dimensional Drawing

White box packing, More safe transportation.



# Easy to install, complete accessories

Save time and effort, tool-less design



Insert the meter into the mounting plate

Mounting brackets pass through the screws and the top side against the mounting plate, and secured by screw nuts.





## Product contactor definition



Docking contactor according definition with the device port one.

1	Timing control terminal. Effective when connected to battery negative pole
2	Key switch. Effective when connected to battery positive pole
3/4	Relay output terminal.
5	Power input negative terminal. Connect to battery negative pole
6	Timing control terminal. Connected to battery positive pole
7	Positive pole of battery
8	Voltage range control terminal. Voltage is 12/36V when connected to nothing, voltage is 24/48V when connected to negative power supply.

SPECIFICATIONS		Operating voltage	DC 12-48V	N.W.	135g
Product Name	Battery Indicator with Hour Meter	Timing range	99999H	Waterproof Rate	IP65
Item Number	SL-BI012	Timing accuracy	0.1H	Charging delay time	200S
Product Size	Φ64.5mm×66mm	Voltage accuracy	0.5%	Delay time of every bar	155S
Display Screen	Green backlight LCD	Internal Battery	CR2450 540mAH	Housing Material	ABS
Screen Size	25.5mm×36mm	Packing Size	70x70x70mm	Package	White box